

## Laser Lab Instruments

Detectors

Power Meters

CCD Cameras

Optical Chopper

Beam Profilers & Extensions Sets

Spectrometers

Temperature Controller & Shutter

Filter Wheels

# S200 Series High Power Thermal Sensor Heads

The S200 Series Sensors Heads are equipped with thermopile sensors with broadband coating for a wavelength range of 250nm - 10.6µm. This series is designed for free space optical power measurements in the range of 20mW to 30W.

All S200 sensors are compatible with our PM100, PM300 and PM50 power meter consoles. Each sensor head is individually calibrated, with data stored in a non-volatile memory inside the connector, and shipped with a NIST Traceable Calibration Certificate.



S213A  
(30W)



S212A  
(10W)



S210A  
(3W)

### Specifications

- **Sensor:** Thermal
- **Spectral Range:** 250nm - 10.6µm
- **Measurement Uncertainty:** ±5%
- **Optical Damage Threshold:** 200W/cm<sup>2</sup> CW  
3.3J/cm<sup>2</sup> (1ms Pulse @ 1064nm)  
50mJ/cm<sup>2</sup> (20ns Pulse @ 1064nm)
- **Aperture Thread:**  
S210A: 3/4" - 32  
S212A: 3/4" - 32  
(After Removing Heat Sink)  
S213A: None
- **Size:**  
S210A: 1.3" x Ø2.5"  
S212A: 3.2" x Ø2.5"  
S213A: 3.6" x Ø2.5"

	S210A	S212A	S213A
Optical Power Range	20mW - 3W	20mW - 10W	100mW - 30W
Input Aperture	Ø3/4"	Ø1/2"	Ø5/8"
Distance to Detector:	0.315" (8mm)	2.20" (55.9mm)	0.38" (9.7mm)



SM1A13

The SM1A13 thread adapter converts the internal 3/4"-32 threads of S210A and S212A to our standard SM05 (0.535"-40) and SM1 (1.035"-40) thread. The adapter allows using our fiber adapters SM1FC, SM1SMA as well as our SM1 stackable lens tubes (see page 208).

ITEM#	\$	£	€	RMB	DESCRIPTION
S210A	\$ 650.00	£ 409.50	€ 604.50	¥ 6,207.50	Thermal Sensor, 250nm-10.6µm, 20mW-3W
S212A	\$ 720.00	£ 453.60	€ 669.60	¥ 6,876.00	Thermal Sensor, 250nm-10.6µm, 20mW-10W
S213A	\$ 812.00	£ 511.60	€ 755.20	¥ 7,754.60	Thermal Sensor, 250nm-10.6µm, 100mW-30W
SM1A13	\$ 28.00	£ 17.60	€ 26.00	¥ 267.40	3/4"-32 to SM05/SM1 Thermal Thread Adapter

## SM1 Series Fiber Adapters

These adapters allow connectorized fibers to be attached to our thermal sensors.

ITEM#	\$	£	€	RMB	DESCRIPTION
SM1FC	\$ 26.00	£ 16.40	€ 24.20	¥ 248.30	SM1 to FC Adapter
SM1SMA	\$ 26.00	£ 16.40	€ 24.20	¥ 248.30	SM1 to SMA Adapter
SM1ST	\$ 26.00	£ 16.40	€ 24.20	¥ 248.30	SM1 to ST Adapter

SM1FC



SM1ST



SM1SMA

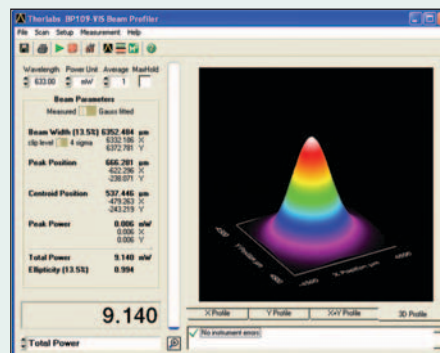


## Laser Beam Profiler

TOOLS  
OF THE  
TRADE

- High Precision Analysis of Beam Quality and Spatial Power Distribution
- Powerful Graphical Interface
- USB 2.0

User software showing pseudo 3D beam profile



BP100 SERIES  
(Base & Post not included)

See Page 966