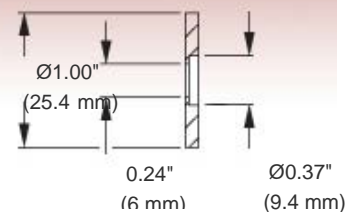
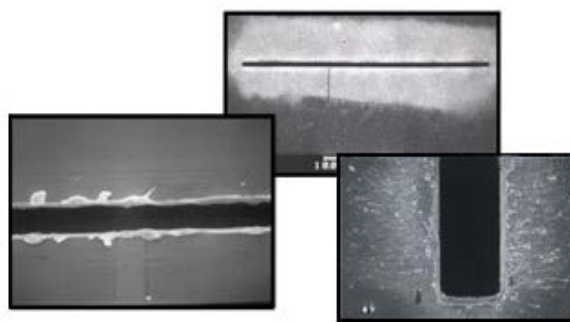


## S200R - Nov 17, 2017

Item # S200R was discontinued on Nov 17, 2017. For informational purposes, this is a copy of the website content at that time and is valid only for the stated product.

### MOUNTED SLITS

- ▶ 12 Slit Widths Available Ranging from 5-200  $\mu\text{m}$
- ▶  $\text{\O}1"$  Housing is SM1 Compatible
- ▶ High Damage Threshold



[Hide Overview](#)

#### OVERVIEW

##### Slit Dimensions & Material

- Slit Widths Available: 5 - 200  $\mu\text{m}$  (See Table to Right for Details)
- Slit Length: 3 mm
- Slit Thickness: 12.8  $\mu\text{m}$
- Housing:  $\text{\O}1"$  Outer Diameter x 0.10" Thick
- Slit Material: 302 Stainless Steel w/ Black Oxide Finish
- Unmounted Slit:  $\text{\O}3/8"$  (9.5 mm) x 0.0005" (12.8  $\mu\text{m}$ ) Thick
- Position Tolerance of Slit:  $\text{\O}0.006"$  ( $\text{\O}0.15$  mm) within the Foil Disk

##### Damage Thresholds

- $5 \times 10^4$  W/mm<sup>2</sup>, 75 ns Pulse @ 700 nm
- $1 \times 10^5$  W/mm<sup>2</sup>, 10 ns Pulse @ 700 nm
- $1 \times 10^3$  W/mm<sup>2</sup>, CW @ 10.6  $\mu\text{m}$

Slit Width	Tolerance
5 $\mu\text{m}$	$\pm 1$ $\mu\text{m}$
10 $\mu\text{m}$	$\pm 1$ $\mu\text{m}$
15 $\mu\text{m}$	$\pm 1$ $\mu\text{m}$
20 $\mu\text{m}$	$\pm 2$ $\mu\text{m}$
30 $\mu\text{m}$	$\pm 2$ $\mu\text{m}$
40 $\mu\text{m}$	$\pm 2$ $\mu\text{m}$
50 $\mu\text{m}$	$\pm 3$ $\mu\text{m}$
100 $\mu\text{m}$	$\pm 4$ $\mu\text{m}$
150 $\mu\text{m}$	$\pm 4$ $\mu\text{m}$
200 $\mu\text{m}$	$\pm 4$ $\mu\text{m}$

These slits are mounted in a  $\text{\O}1"$  plate, perfect for mounting in our SM1-series lens tubes (SM1L03). The slit in the foil disk is not necessarily aligned horizontally or vertically during the assembly process.

If you do not see what you need in our stocked offerings below, it is possible to special order slits that are fabricated from different substrate materials, have different slit sizes, incorporate multiple slits in one foil, or provide different slit configurations. Customized housings are also available. Please contact Technical Support to discuss your specific needs.

[Hide Part Numbers](#)

Part Number	Description	Price	Availability
S5R	Ø1" Mounted Slit, 5 ± 1 µm Wide, 3 mm Long	\$116.00	Today
S10R	Ø1" Mounted Slit, 10 ± 1 µm Wide, 3 mm Long	\$106.00	Today
S15R	Ø1" Mounted Slit, 15 ± 1 µm Wide, 3 mm Long	\$104.00	Today
S20R	Ø1" Mounted Slit, 20 ± 2 µm Wide, 3 mm Long	\$101.00	Today
S30R	Ø1" Mounted Slit, 30 ± 2 µm Wide, 3 mm Long	\$101.00	Today
S40R	Ø1" Mounted Slit, 40 ± 2 µm Wide, 3 mm Long	\$95.75	Today
S50R	Ø1" Mounted Slit, 50 ± 3 µm Wide, 3 mm Long	\$95.75	Today
S100R	Ø1" Mounted Slit, 100 ± 4 µm Wide, 3 mm Long	\$95.75	Today
S150R	Ø1" Mounted Slit, 150 ± 4 µm Wide, 3 mm Long	\$95.75	Today
S200R	Ø1" Mounted Slit, 200 ± 4 µm Wide, 3 mm Long	\$95.75	Lead Time

Visit the *Mounted Slits* page for pricing and availability information:

[https://www.thorlabs.com/newgroupage9.cfm?objectgroup\\_id=1464](https://www.thorlabs.com/newgroupage9.cfm?objectgroup_id=1464)