

CHAPTERS

Tables/
Breadboards

Mechanics

Optomechanic
Devices

Kits

Lab Supplies

SECTIONS

Breadboards

Breadboard
Supports

Breadboard
Accessories

ScienceDesk

ScienceDesk
Accessories

Optical Tables

Table Supports

Optical Table
Accessories

Standard Series of Optical Tabletops (Page 1 of 2)

Thorlabs' Standard Series of optical tables are ideal for general-purpose applications that are not sensitive to external vibrations. These tables utilize similar construction techniques and the same high-quality materials as our UltraPlus range of tables (see pages 56 - 57). With a steel, single-honeycomb core and broadband damping, this series offers enhanced dynamic rigidity and stiffness.

The Standard Series of tabletops is ideally suited for less demanding general photonics applications but would not be recommended for highly sensitive interferometric applications.



The PTM11108 optical table is shown with the PTP603 passive isolation system featured on page 66.

Table Supports Sold Separately. For Our Full Line of Vibration-Isolation Systems (See Pages 63 - 68).

US Patent 5402734

Standard Series - Suited for Less-Demanding, General Photonics Applications

Features

- Athermalized Design for Excellent Thermal Stability
- Minimal Deflection Under Load
- Excellent Surface Flatness, Achieved Using a Thermal Bonding Process Under Pressure
- Flatness: $\pm 0.004'' (\pm 0.1 \text{ mm})$ Over any 11.0 ft² (1 m²) Area
- High-Density Plated Steel
- High-Density Honeycomb Core
- Proprietary Broadband Damping

Specifications

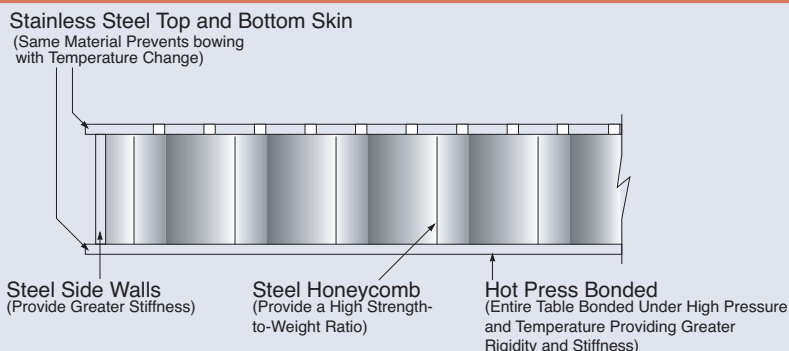
- **Table Thickness:** 8.3" (210 mm)
- **Flatness:** $\pm 0.004'' (\pm 0.1 \text{ mm})$ Over any 11.0 ft² (1 m²) Area
- **Construction:** Double-Skin, Steel, Single-Honeycomb Core
- **Top and Bottom Skins**
 - Matched Materials for Athermalized Design
 - Magnetic Stainless Steel, 5 mm Thick
 - Top Skin is Brushed Finish
- **Core:** High-Density, Plated-Steel Honeycomb
- **Damping:** Proprietary Broadband Damping
- **Sides:** Black Laminated-Steel Sides, Slightly Inset
- **Mounting Hole Pattern**
 - Metric: M6 x 1.0 on 25 mm Centers
 - Imperial: 1/4"-20 on 1" Centers
- **Edge to First Hole Center**
 - Metric Models: 50 mm on All Sides
 - Imperial Models (3.3' Wide): 2.0" on Ends and 2.68" on Sides
 - Imperial Models (4.1' Wide): 2.0" on Ends and 2.6" on Sides
 - Imperial Models (4.9' Wide): 2.0" on Ends and 2.52" on Sides
- **Dynamic Deflection Coefficient (Max):** $< 1.3 \times 10^{-3}^*$
- **Relative Tabletop Motion (Max):** $< 0.27 \text{ nm}$ (10.5 x 10⁻⁹ in)*
- **Deflection Under Load:** $< 1.65 \text{ } \mu\text{m}$ (6.5 x 10⁻⁵ in) for a 250 lbs (113 kg) Load*

*Measured on a 4' x 8' x 12.2" table with isolator transmissibility $T < 0.01$ above 10 Hz, environmental vibrations power spectral density (PSD) $< 10^{-9} \text{ g}^2/\text{Hz}$.

Standard Series of Optical Tabletops (Page 2 of 2)

Standard Series

Cross Section of Tabletop with Double-Skin Design



Additional Size Options Available

The imperial and metric Standard Series of Optical Tables featured on these two pages are stocked for immediate shipment. However, Thorlabs also has the tooling and supplies necessary to manufacture numerous other sizes quickly and efficiently with minimal lead time. Please visit www.thorlabs.com to view our

non-standard size options and to place an order. Finally, in addition to these stocked and non-stocked optical table options, Thorlabs can produce truly custom optical tables that offer unique cutouts, hole patterns, and dimensions. Please contact tech support to discuss your application needs.

Imperial, Standard Series of Optical Tables, 1/4"-20 Mounting Holes Stocked in U.S. for Immediate Delivery

ITEM#*	\$	£	€	RMB	DIMENSIONS (L x W x H)	WEIGHT
PTM11104	\$ 3,266.30	£ 2,351.74	€ 2,515.10	¥ 26,032.41	6' x 3.3' x 8.3"	499 lbs/227 kg
PTM11108	\$ 4,015.60	£ 2,891.23	€ 3,092.00	¥ 32,004.33	6' x 4.1' x 8.3"	618 lbs/281 kg
PTM11109	\$ 5,299.50	£ 3,815.64	€ 4,080.60	¥ 42,237.02	8' x 4.1' x 8.3"	823 lbs/374 kg

*Please contact your local sales office for a quotation including shipping.

Metric, Standard Series of Optical Tables, M6 x 1.0 Mounting Holes Stocked in U.K. for Immediate Delivery

ITEM#*	\$	£	€	RMB	DIMENSIONS (L x W x H)	WEIGHT
PTM51504	\$ 3,552.00	£ 2,557.44	€ 2,735.00	¥ 28,309.44	2000 mm x 1000 mm x 210 mm	547 lbs/248 kg
PTM51508	\$ 4,386.90	£ 3,158.57	€ 3,377.90	¥ 34,963.59	2000 mm x 1250 mm x 210 mm	677 lbs/307 kg
PTM51509	\$ 5,444.30	£ 3,919.90	€ 4,192.10	¥ 43,391.07	2500 mm x 1250 mm x 210 mm	847 lbs/384 kg
PTM51513	\$ 6,288.00	£ 4,527.36	€ 4,841.80	¥ 50,115.36	2500 mm x 1500 mm x 210 mm	1008 lbs/457 kg

*Please contact your local sales office for a quotation including shipping.

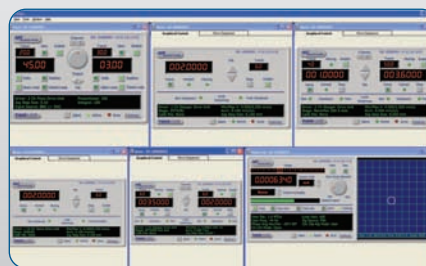
Have you seen...

T-Cube Laboratory Automation Tools



The T-Cube product line provides a compact system of over a dozen instruments that facilitate lab automation. The T-Cubes address the space and cable management problems that come with system automation. All T-Cubes have a manual interface and preprogrammed default settings that allow for immediate, basic control of any

compatible device upon connecting it to the controller. In addition, each controller has a USB interface through which the T-Cube can be operated remotely via a computer.



For more details, see pages 616 - 621