

56 Sparta Avenue • Newton, New Jersey 07860
 (973) 300-3000 Sales • (973) 300-3600 Fax
 www.thorlabs.com

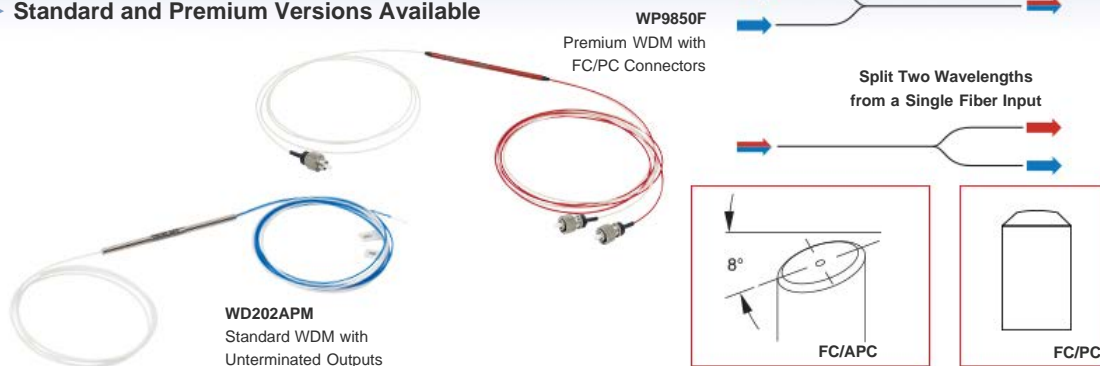


WD202EPM - Dec 22, 2017

Item # WD202EPM was discontinued on Dec 22, 2017. For informational purposes, this is a copy of the website content at that time and is valid only for the stated product.

2-WAVELENGTH, POLARIZATION-MAINTAINING WDMs

- ▶ Combine Two Wavelengths in PM Panda Fiber
- ▶ Connector Key Aligned to Slow Axis
- ▶ Underterminated, FC/PC, or FC/APC Outputs
- ▶ Standard and Premium Versions Available

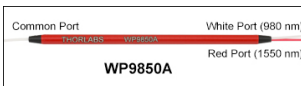


[Hide Overview](#)

OVERVIEW

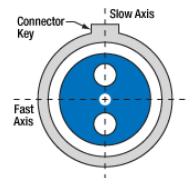
Features

- Two Wavelength Combinations: 980/1064 nm and 980/1550 nm
 - Standard: ≥ 18 dB or ≥ 20 dB PER Excluding Connectors
 - Premium: ≥ 20 dB PER Including Connectors
- Pump Signal WDM for PM Erbium-Doped and Ytterbium-Doped Fiber Amplifiers
- PM Panda Fiber on All Ports
- Slow Axis Aligned to Connector Key
- Individual Test Report Included with Each Premium Coupler (See the PER Measurement Tab; [Click Here for a Sample Data Sheet](#))



Click for Details
 The housings of our premium WDMs are engraved with the Item # and port wavelengths. The common port is located on the single fiber side and has a white jacket.

Panda PM Fiber Cross Section



Thorlabs' fused Polarization Maintaining (PM) Wavelength Division Multiplexers (WDMs) combine multiple wavelengths of light in PM fiber while maintaining the polarization of the incident light. WDMs are reversible; light containing the two specified wavelengths can be split into two separate output fibers. The all-fiber construction of our PM WDMs offers excellent reliability and high-power handling characteristics. As seen in the diagram to the right, stress rods run parallel to the fiber's core and apply stress that creates birefringence in the fiber's core, allowing polarization-maintaining operation.

Thorlabs' Premium PM WDMs (indicated by Item #'s starting with WP) provide an improved PER (≥ 20 dB including connectors) and a wide -40 °C to 85 °C operating range. These WDMs undergo extensive testing and verification of the PER; details of our testing procedures are provided on the *PER Measurement* tab. Testing results are included with a data sheet that is shipped with premium PM WDMs. A sample data sheet for the 980/1550 nm PM WDMs can be viewed [here](#). In addition, a specification sheet with a plot of the insertion loss is available for each premium coupler; click the red Docs icon () below.

These WDMs are available in two different wavelength configurations and are offered with unterminated fiber ends, FC/PC, or FC/APC connector options. They can be readily specified in a wide variety of applications, enabling rapid design cycles and new project builds. All specifications are based on slow axis launch. For custom requests, please contact Technical Support.

Other Wavelength Division Multiplexers (WDMs)				
2-Wavelength WDMs		3-Wavelength WDMs	Polarization-Maintaining WDMs	Fused Fiber Couplers
Visible/NIR ($\lambda \leq 785$ nm)	Infrared ($\lambda \geq 980$ nm)	Visible/NIR	Infrared	

[Hide WDM Design](#)

WDM DESIGN

Wavelength Division Multiplexer Design

Thorlabs' Wavelength Division Multiplexers (WDMs) are designed to combine or split light at two different wavelengths. Thorlabs offers a variety of multiplexers with wavelength combinations spanning the visible, near-IR, and IR regions of the spectrum. Our visible wavelength division multiplexers are also known as "wavelength combiners" as they are commonly used in microscopy applications to generate multi-color composite images.

The animation to the right illustrates the basic operating principles of a 1x2 WDM. When combining light, the wavelength-specific ports will transmit light within a specified bandwidth region and combine them into a multi-wavelength signal output at the common port, with minimal loss in signal.

Except where indicated, our WDMs are bidirectional; they can also split a two-wavelength signal that is inserted into the common port into the component wavelengths. For optimal combining/splitting performance, the input signal(s) should contain only the wavelengths specified for the WDM. An insertion loss graph can help determine the transmission and coupling performance within and outside the specified bandwidth. For our WDMs that have red, engraved housings, this data is included with the item-specific datasheet that ships with each coupler.

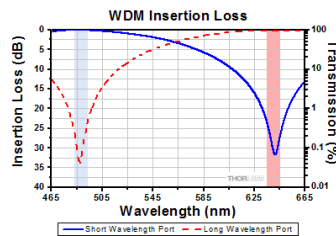
Insertion Loss and Isolation

WDM performance is typically quantified using insertion loss. As seen in the definition below, insertion loss (measured in dB) is the ratio of the input power to the output power from each leg of the WDM. For optical systems, the definition of insertion loss is given as:

$$\text{Insertion Loss (dB)} = 10 \log \frac{P_{in} \text{ (mW)}}{P_{out} \text{ (mW)}}$$

where P_{in} and P_{out} are the input and output powers (in mW).

Each port of the coupler is designed to have low insertion loss (i.e., high transmission) at the desired wavelength while suppressing the signal at the specified wavelength of the other port, which minimizes cross talk between the ports. Therefore, isolation is specified as the insertion loss of these undesired wavelengths. High dB values of isolation are ideal for signal separation applications using a WDM. For example, in the graph shown to the right, the long wavelength port (shown using a red dashed line) has a low insertion loss around 640 nm (indicated by the red shaded region), but exhibits high isolation (>25 dB) in the region specified for the short wavelength port (indicated by the light blue shaded region).



The shaded regions in the plot indicate the bandwidth where each port meets the specified performance.

Wavelength Division Multiplexer Manufacturing Process

This section details the steps used in manufacturing and verifying the performance of our wavelength division multiplexers.

Step 1

At the first stage, two fibers are fused on a manufacturing station so that the two fiber cores are in close proximity. This allows light to propagate between the two fiber cores over the fused region in a process known as evanescent coupling. The fusing process is stopped once the desired insertion loss and isolation specifications are achieved.



In the diagram, the fibers are color-coded: blue for the short wavelength port and red for the long wavelength port.

The output from the short wavelength port is monitored during the fusing process using a broadband source on one side and an optical spectrum analyzer (OSA) on the other. The insertion loss as a function of wavelength is calculated from the spectrum obtained from the OSA.

Step 2

To verify the WDM performance, the output is measured in the long wavelength port using a broadband source and OSA. By combining the plots obtained in steps 1 and 2, the insertion loss and isolation in each channel can be calculated.



In the diagram, the fibers are color-coded: blue for the short wavelength port and red for the long wavelength port.

[Hide Damage Threshold](#)

DAMAGE THRESHOLD

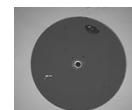
Laser-Induced Damage in Silica Optical Fibers

The following tutorial details damage mechanisms relevant to unterminated (bare) fiber, terminated optical fiber, and other fiber components from laser light sources. These mechanisms include damage that occurs at the air / glass interface (when free-space coupling or when using connectors) and in the optical fiber itself. A fiber component, such as a bare fiber, patch cable, or fused coupler, may have multiple potential avenues for damage (e.g., connectors, fiber end faces, and the device itself). The maximum power that a fiber can handle will always be limited by the lowest limit of any of these damage mechanisms.

While the damage threshold can be estimated using scaling relations and general rules, absolute damage thresholds in optical fibers are very application dependent and user specific. Users can use this guide to estimate a safe power level that minimizes the risk of damage. Following all appropriate preparation and handling guidelines, users should be able to operate a fiber component up to the specified maximum power level; if no maximum is specified for a component, users should abide by the "practical safe level" described below for safe operation of the component. Factors that can reduce power handling and cause damage to a fiber component include, but are not limited to, misalignment during fiber coupling, contamination of the fiber end face, or imperfections in the fiber itself. For further discussion about an optical fiber's power handling abilities for a specific application, please contact Thorlabs' Tech Support.

Damage at the Air / Glass Interface

There are several potential damage mechanisms that can occur at the air / glass interface. Light is incident on this interface when free-space coupling or when two fibers are mated using optical connectors. High-intensity light can damage the end face leading to reduced power handling and permanent damage to the fiber. For fibers terminated with optical connectors where the connectors are fixed to the fiber ends using epoxy, the heat generated by high-intensity light can burn the epoxy and leave residues on the fiber facet directly in the beam path.



Click to Enlarge Damaged Fiber End



Click to Enlarge Undamaged Fiber End

Quick Links
Damage at the Air / Glass Interface
Intrinsic Damage Threshold
Preparation and Handling of Optical Fibers

Damage Mechanisms on the Bare Fiber End Face

Damage mechanisms on a fiber end face can be modeled similarly to bulk optics, and industry-standard damage thresholds for UV Fused Silica substrates can be applied to silica-based fiber. However, unlike bulk optics, the relevant surface areas and beam diameters involved at the air / glass interface of an optical fiber are very small, particularly for coupling into single mode (SM) fiber. therefore, for a given power density, the power incident on the fiber needs to be lower for a smaller beam diameter.

The table to the right lists two thresholds for optical power densities: a theoretical damage threshold and a "practical safe level". In general, the theoretical damage threshold represents the estimated maximum power density that can be incident on the fiber end face without risking damage with very good fiber end face and coupling conditions. The "practical safe level" power density represents minimal risk of fiber damage. Operating a fiber or component beyond the practical safe level is possible, but users must follow the appropriate handling instructions and verify performance at low powers prior to use.

Estimated Optical Power Densities on Air / Glass Interface ^a		
Type	Theoretical Damage Threshold ^b	Practical Safe Level ^c
CW (Average Power)	~1 MW/cm ²	~250 kW/cm ²
10 ns Pulsed (Peak Power)	~5 GW/cm ²	~1 GW/cm ²

- All values are specified for unterminated (bare) silica fiber and apply for free space coupling into a clean fiber end face.
- This is an estimated maximum power density that can be incident on a fiber end face without risking damage. Verification of the performance and reliability of fiber components in the system before operating at high power must be done by the user, as it is highly system dependent.
- This is the estimated safe optical power density that can be incident on a fiber end face without damaging the fiber under most operating conditions.

Calculating the Effective Area for Single Mode and Multimode Fibers

The effective area for single mode (SM) fiber is defined by the mode field diameter (MFD), which is the cross-sectional area through which light propagates in the fiber; this area includes the fiber core and also a portion of the cladding. To achieve good efficiency when coupling into a single mode fiber, the diameter of the input beam must match the MFD of the fiber.

As an example, SM400 single mode fiber has a mode field diameter (MFD) of ~Ø3 µm operating at 400 nm, while the MFD for SMF-28 Ultra single mode fiber operating at 1550 nm is Ø10.5 µm. The effective area for these fibers can be calculated as follows:

$$\text{SM400 Fiber: Area} = \pi \times (\text{MFD}/2)^2 = \pi \times (1.5 \mu\text{m})^2 = 7.07 \mu\text{m}^2 = 7.07 \times 10^{-8} \text{ cm}^2$$

$$\text{SMF-28 Ultra Fiber: Area} = \pi \times (\text{MFD}/2)^2 = \pi \times (5.25 \mu\text{m})^2 = 86.6 \mu\text{m}^2 = 8.66 \times 10^{-7} \text{ cm}^2$$

To estimate the power level that a fiber facet can handle, the power density is multiplied by the effective area. Please note that this calculation assumes a uniform intensity profile, but most laser beams exhibit a Gaussian-like shape within single mode fiber, resulting in a higher power density at the center of the beam compared to the edges. Therefore, these calculations will slightly overestimate the power corresponding to the damage threshold or the practical safe level. Using the estimated power densities assuming a CW light source, we can determine the corresponding power levels as:

$$\begin{aligned} \text{SM400 Fiber: } 7.07 \times 10^{-8} \text{ cm}^2 \times 1 \text{ MW/cm}^2 &= 7.1 \times 10^{-8} \text{ MW} = 71 \text{ mW (Theoretical Damage Threshold)} \\ 7.07 \times 10^{-8} \text{ cm}^2 \times 250 \text{ kW/cm}^2 &= 1.8 \times 10^{-5} \text{ kW} = 18 \text{ mW (Practical Safe Level)} \end{aligned}$$

$$\begin{aligned} \text{SMF-28 Ultra Fiber: } 8.66 \times 10^{-7} \text{ cm}^2 \times 1 \text{ MW/cm}^2 &= 8.7 \times 10^{-7} \text{ MW} = 870 \text{ mW (Theoretical Damage Threshold)} \\ 8.66 \times 10^{-7} \text{ cm}^2 \times 250 \text{ kW/cm}^2 &= 2.1 \times 10^{-4} \text{ kW} = 210 \text{ mW (Practical Safe Level)} \end{aligned}$$

The effective area of a multimode (MM) fiber is defined by the core diameter, which is typically far larger than the MFD of an SM fiber. For optimal coupling, Thorlabs recommends focusing a beam to a spot roughly 70 - 80% of the core diameter. The larger effective area of MM fibers lowers the power density on the fiber end face, allowing higher optical powers (typically on the order of kilowatts) to be coupled into multimode fiber without damage.

Damage Mechanisms Related to Ferrule / Connector Termination

Fibers terminated with optical connectors have additional power handling considerations. Fiber is typically terminated using epoxy to bond the fiber to a ceramic or steel ferrule. When light is coupled into the fiber through a connector, light that does not enter the core and propagate down the fiber is scattered into the outer layers of the fiber, into the ferrule, and the epoxy used to hold the fiber in the ferrule. If the light is intense enough, it can burn the epoxy, causing it to vaporize and deposit a residue on the face of the connector. This results in localized absorption sites on the fiber end face that reduce coupling efficiency and increase scattering, causing further damage.

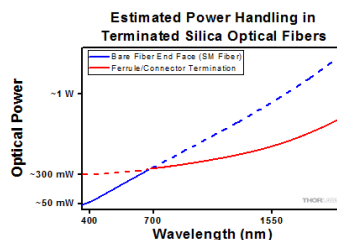
For several reasons, epoxy-related damage is dependent on the wavelength. In general, light scatters more strongly at short wavelengths than at longer wavelengths. Misalignment when coupling is also more likely due to the small MFD of short-wavelength SM fiber that also produces more scattered light.

To minimize the risk of burning the epoxy, fiber connectors can be constructed to have an epoxy-free air gap between the optical fiber and ferrule near the fiber end face. Our high-power multimode fiber patch cables use connectors with this design feature.

Determining Power Handling with Multiple Damage Mechanisms

When fiber cables or components have multiple avenues for damage (e.g., fiber patch cables), the maximum power handling is always limited by the lowest damage threshold that is relevant to the fiber component.

As an illustrative example, the graph to the right shows an estimate of the power handling limitations of a single mode fiber patch cable due to damage to the fiber end face and damage via an optical connector. The total power handling of a terminated fiber at a given wavelength is limited by the lower of the two limitations at any given wavelength (indicated by the solid lines). A single mode fiber operating at around 488 nm is primarily limited by damage to the fiber end



Click to Enlarge
Plot showing approximate power handling levels for single mode silica optical fiber with a termination. Each line shows the estimated power level due to a specific damage mechanism. The maximum power handling is limited by the lowest power level from all relevant damage mechanisms (indicated by a solid line).

face (blue solid line), but fibers operating at 1550 nm are limited by damage to the optical connector (red solid line).

In the case of a multimode fiber, the effective mode area is defined by the core diameter, which is larger than the effective mode area for SM fiber. This results in a lower power density on the fiber end face and allows higher optical powers (on the order of kilowatts) to be coupled into the fiber without damage (not shown in graph). However, the damage limit of the ferrule / connector termination remains unchanged and as a result, the maximum power handling for a multimode fiber is limited by the ferrule and connector termination.

Please note that these are rough estimates of power levels where damage is very unlikely with proper handling and alignment procedures. It is worth noting that optical fibers are frequently used at power levels above those described here. However, these applications typically require expert users and testing at lower powers first to minimize risk of damage. Even still, optical fiber components should be considered a consumable lab supply if used at high power levels.

Intrinsic Damage Threshold

In addition to damage mechanisms at the air / glass interface, optical fibers also display power handling limitations due to damage mechanisms within the optical fiber itself. These limitations will affect all fiber components as they are intrinsic to the fiber itself. Two categories of damage within the fiber are damage from bend losses and damage from photodarkening.

Bend Losses

Bend losses occur when a fiber is bent to a point where light traveling in the core is incident on the core/cladding interface at an angle higher than the critical angle, making total internal reflection impossible. Under these circumstances, light escapes the fiber, often in a localized area. The light escaping the fiber typically has a high power density, which burns the fiber coating as well as any surrounding furcation tubing.

A special category of optical fiber, called double-clad fiber, can reduce the risk of bend-loss damage by allowing the fiber's cladding (2nd layer) to also function as a waveguide in addition to the core. By making the critical angle of the cladding/coating interface higher than the critical angle of the core/clad interface, light that escapes the core is loosely confined within the cladding. It will then leak out over a distance of centimeters or meters instead of at one localized spot within the fiber, minimizing the risk of damage. Thorlabs manufactures and sells 0.22 NA double-clad multimode fiber, which boasts very high, megawatt range power handling.

Photodarkening

A second damage mechanism, called photodarkening or solarization, can occur in fibers used with ultraviolet or short-wavelength visible light, particularly those with germanium-doped cores. Fibers used at these wavelengths will experience increased attenuation over time. The mechanism that causes photodarkening is largely unknown, but several fiber designs have been developed to mitigate it. For example, fibers with a very low hydroxyl ion (OH) content have been found to resist photodarkening and using other dopants, such as fluorine, can also reduce photodarkening.

Even with the above strategies in place, all fibers eventually experience photodarkening when used with UV or short-wavelength light, and thus, fibers used at these wavelengths should be considered consumables.

Preparation and Handling of Optical Fibers

General Cleaning and Operation Guidelines

These general cleaning and operation guidelines are recommended for all fiber optic products. Users should still follow specific guidelines for an individual product as outlined in the support documentation or manual. Damage threshold calculations only apply when all appropriate cleaning and handling procedures are followed.

1. All light sources should be turned off prior to installing or integrating optical fibers (terminated or bare). This ensures that focused beams of light are not incident on fragile parts of the connector or fiber, which can possibly cause damage.
2. The power-handling capability of an optical fiber is directly linked to the quality of the fiber/connector end face. Always inspect the fiber end prior to connecting the fiber to an optical system. The fiber end face should be clean and clear of dirt and other contaminants that can cause scattering of coupled light. Bare fiber should be cleaved prior to use and users should inspect the fiber end to ensure a good quality cleave is achieved.
3. If an optical fiber is to be spliced into the optical system, users should first verify that the splice is of good quality at a low optical power prior to high-power use. Poor splice quality may increase light scattering at the splice interface, which can be a source of fiber damage.
4. Users should use low power when aligning the system and optimizing coupling; this minimizes exposure of other parts of the fiber (other than the core) to light. Damage from scattered light can occur if a high power beam is focused on the cladding, coating, or connector.

Tips for Using Fiber at Higher Optical Power

Optical fibers and fiber components should generally be operated within safe power level limits, but under ideal conditions (very good optical alignment and very clean optical end faces), the power handling of a fiber component may be increased. Users must verify the performance and stability of a fiber component within their system prior to increasing input or output power and follow all necessary safety and operation instructions. The tips below are useful suggestions when considering increasing optical power in an optical fiber or component.

1. Splicing a fiber component into a system using a fiber splicer can increase power handling as it minimizes possibility of air/fiber interface damage. Users should follow all appropriate guidelines to prepare and make a high-quality fiber splice. Poor splices can lead to scattering or regions of highly localized heat at the splice interface that can damage the fiber.
2. After connecting the fiber or component, the system should be tested and aligned using a light source at low power. The system power can be ramped up slowly to the desired output power while periodically verifying all components are properly aligned and that coupling efficiency is not changing with respect to optical launch power.
3. Bend losses that result from sharply bending a fiber can cause light to leak from the fiber in the stressed area. When operating at high power, the localized heating that can occur when a large amount of light escapes a small localized area (the stressed region) can damage the fiber. Avoid disturbing or accidentally bending fibers during operation to minimize bend losses.
4. Users should always choose the appropriate optical fiber for a given application. For example, large-mode-area fibers are a good alternative to standard single mode fibers in high-power applications as they provide good beam quality with a larger MFD, decreasing the power density on the air/fiber interface.

- Step-index silica single mode fibers are normally not used for ultraviolet light or high-peak-power pulsed applications due to the high spatial power densities associated with these applications.

[Hide PER Measurement](#)

PER MEASUREMENT

Measurement of Polarization Extinction Ratio (PER)

The polarization extinction ratio (PER) is a measure of how well a polarization-maintaining (PM) fiber or device can prevent cross coupling between the different polarization axes of the fiber. External stress on a fiber from sources such as heating, bending, or pulling can cause the PER to change.



Click to Enlarge
Setup to Measure Extinction Ratio of a 1550 nm PM Coupler

There are two accepted techniques for measuring PER in a fiber coupler. The most common method uses a low-coherence (unpolarized or circularly polarized) broadband light source and measures the extinction ratio with a linear polarizer and power meter. An alternative method uses a narrowband, high-coherence light source and measures the PER with a polarimeter.

Thorlabs uses the power meter method to characterize the extinction ratio performance of the premium PM fiber couplers sold on this page. An example of the power meter setup is shown in the image and table to the right. A broadband light source is input into the linear polarizer module, which sets the polarization of light input into the coupler. The output from one of the legs is sent to the analyzer module, which contains another polarizer and the power meter for measuring the output. Alternatively, the analyzer module can be replaced with an extinction ratio meter (Item # ERM100).

The PER is measured using the test procedure below.

Testing Procedure

- Prepare the fiber end faces of the PM coupler to connect to the measurement setup.
 - For bare fiber ends, strip and cleave the fibers. Use a bare fiber terminator, such as the BFT1, to create a temporary fiber termination.
 - For terminated fiber ends, clean and inspect the connector end faces.
 - Attach a fiber optic light trap to any fiber leads not being measured.
- Adjust the polarizers in the linear polarizer and analyzer modules sequentially until a minimum power value is measured by the power meter. Record the measured value as P_{min} .
- Rotate the analyzer rotation mount by 90°. Then record the measured value as P_{max} .

After P_{min} and P_{max} are measured, the extinction ratio can be calculated using the equation:

$$PER(dB) = -10 \log \left(\frac{P_{min}}{P_{max}} \right)$$

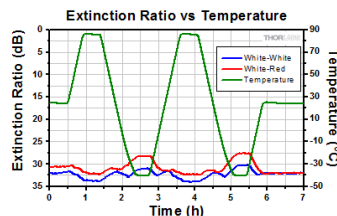
Temperature Cycling Tests

PM couplers typically exhibit diminished PER performance when used at sub-zero temperatures due to the contraction of the adhesives that are used in the coupler package. This effect disrupts the polarization state of light within the coupler that leads to a decrease in PER. Soft adhesives can be used to mitigate the impact of cold-temperature operation, but can create reliability issues at higher temperatures. At high temperatures, adhesives can soften permanently, which changes the optical properties of the coupler.

Thorlabs' Premium PM Couplers use a proprietary packaging process and design as well as careful selection of adhesives to enable operation over a very wide temperature range (from -40 °C to 85 °C) without significant changes to PER and other optical specifications. The graph to the right illustrates a 7-hour temperature cycling test performed on a PN1550R5A1 PM fiber coupler showing that the PER remains stable over a wide temperature range.

Item # ^a	Description	Qty.
Light Source (Not Shown)		
S5FC1005P	PM Benchtop SLD Source, 1550 nm	1
P1-1550PM-FC-1	Patch Cable, FC/PC, 1550 nm, PM Panda Style, 1 m	1
Linear Polarizer Module		
PAF-X-11-PC-C	FiberPort, FC/PC, 1050 nm - 1620 nm	2
CP08FP	Cage Plates for Mounting FiberPorts	2
LPNIR050-MP2	Linear Polarizer	1
CRM1P	Cage Rotation Mount	1
SM1A6T	Adapter with External SM1 Threads and Internal SM05 Threads	1
ER2-P4	2" (50.8 mm) Long Cage Rods, 4 Pack	1
Analyzer Module		
PAF-X-11-PC-C	FiberPort, FC/PC, 1050 nm - 1620 nm	1
CP08FP	Cage Plates for Mounting FiberPorts	1
LPNIR050-MP2	Linear Polarizer	1
CRM1P	Cage Rotation Mount	1
SM1A6T	Adapter with External SM1 Threads and Internal SM05 Threads	1
CP02	SM1-Threaded (1.035"-40) Cage Plate	1
PM122D	Digital Power Meter, 700 - 1800 nm	1
ER2-P4	2" (50.8 mm) Long Cage Rods, 4 Pack	1

- Item list does not include the posts, post holders, clamps, breadboard, or fiber component tray shown in the photo to the left.



Click to Enlarge
PER measured using the white-white path and white-red path through a PN1550R5A1 PM coupler.

[Hide Polarization-Maintaining WDMs: 980/1064 nm](#)

Polarization-Maintaining WDMs: 980/1064 nm

Standard Item # ^a	Info	Operating Wavelengths	Bandwidth	Insertion Loss (Max) ^{b,c}	Isolation (Min) ^b	Extinction Ratio ^b	Directivity ^b	Fiber Type	Termination
------------------------------	------	-----------------------	-----------	-------------------------------------	------------------------------	-------------------------------	--------------------------	------------	-------------

WD202EPM		980/1064 nm	±5 nm	≤0.8 dB (Pump Port) ≤0.8 dB (Signal Port)	13 dB	≥18 dB	≥55 dB	SM98-PR-U25A-H	No Connectors, Scissor Cut
WD202EPM-FC									FC/PC
WD202EPM-APC									FC/APC

- These couplers are designed and tested for a slow axis launch but will also accept a fast axis launch, though performance is not guaranteed. Please contact Tech Support for details.
- These specifications were measured without connectors and based on a slow axis launch. Please click on the blue icon for complete specifications.
- Pump and signal ports refer to the 980 nm and 1064 nm wavelength ports, respectively.

Part Number	Description	Price	Availability
WD202EPM	980/1064 nm Wavelength Division Multiplexer, No Connectors	\$508.00	3-5 Days
WD202EPM-FC	980/1064 nm Wavelength Division Multiplexer, FC/PC Connectors	\$549.00	Today
WD202EPM-APC	980/1064 nm Wavelength Division Multiplexer, FC/APC Connectors	\$549.00	Lead Time

[Hide Polarization-Maintaining WDMs: 980/1550 nm](#)

Polarization-Maintaining WDMs: 980/1550 nm

Premium Item #	Info	Operating Wavelengths	Bandwidth	Insertion Loss ^a	Isolation ^a	Extinction Ratio ^b	Directivity ^a	Max Power ^c	Fiber Type ^d	Termination
WP9850B		980/1550 nm	±10 nm / ±15 nm	≤0.6 dB (Click for Plot)	≥25 dB	≥20 dB (with Connectors)	≥60 dB	1 W (Bare Fiber) 5 W (Spliced)	PM 98-U25D or Equivalent	No Connectors, Scissor Cut
WP9850F								1 W (Connectors or Bare) 5 W (Spliced)		FC/PC ^e
WP9850A								FC/APC ^e		

- Values are specified with a slow axis launch at room temperature without connectors and measured at the center wavelength through the white common port, as indicated in the diagram above.
- Extinction ratio is specified with a slow axis launch at room temperature with connectors and measured at the center wavelength through the white input port, as indicated in the diagram above. See the *PER Measurement* tab for more information on how extinction ratio is measured.
- Specifies the total maximum power allowed through the component. Coupler performance and reliability under high-power conditions must be determined within the user's setup.
- The fiber used in this coupler is compatible with PM1550-XP fiber. Other fiber types may be available upon request. Please contact Tech Support with inquiries.
- The connectors are aligned to the slow axis of the fiber.

Standard Item # ^a	Info	Operating Wavelengths	Bandwidth	Insertion Loss ^{b,c}	Isolation ^b	Extinction Ratio ^b	Directivity ^b	Fiber Type	Termination
WD202APM		980/1550 nm	±10 nm / ±15 nm	≤0.7 dB (Pump Port) ≤0.7 dB (Signal Port)	≥18 dB	≥20 dB (without Connectors)	≥55 dB	SM98-PR-U25A-H	No Connectors, Scissor Cut
WD202APM-FC									FC/PC
WD202APM-APC									FC/APC

- These couplers are designed and tested for a slow axis launch but will also accept a fast axis launch, though performance is not guaranteed. Please contact Tech Support for details.
- These specifications were measured without connectors and based on a slow axis launch. Please click on the blue icon for complete specifications.
- Pump and signal ports refer to the 980 nm and 1550 nm wavelength ports, respectively.

Part Number	Description	Price	Availability
WP9850B	980/1550 nm Wavelength Division Multiplexer, No Connectors	\$455.00	3-5 Days
WP9850F	980/1550 nm Wavelength Division Multiplexer, FC/PC Connectors	\$495.00	Today
WP9850A	980/1550 nm Wavelength Division Multiplexer, FC/APC Connectors	\$536.00	Lead Time
WD202APM	980/1550 nm Wavelength Division Multiplexer, No Connectors	\$316.00	Today
WD202APM-FC	980/1550 nm Wavelength Division Multiplexer, FC/PC Connectors	\$357.00	Today
WD202APM-APC	980/1550 nm Wavelength Division Multiplexer, FC/APC Connectors	\$357.00	Today

Visit the [2-Wavelength, Polarization-Maintaining WDMs](#) page for pricing and availability information:
https://www.thorlabs.com/newgroupage9.cfm?objectgroup_id=6166

WD202EPM - 980/1064 nm Wavelength Division Multiplexer, No Connectors

Specifications

Specifications ^a	
Operating Wavelengths	980/1064 nm
Bandwidth	±5 nm
Insertion Loss (Max)	≤0.8 dB (Pump Port) ≤0.8 dB (Signal Port)
Isolation (Min)	13 dB
Extinction Ratio	≥18 dB
Return Loss	>50 dB
Directivity	≥55 dB
CW Power (Max)	300 mW
Fiber Length	0.8 m
Jacket	Ø900 µm Hytel [®] Loose Tube
Termination	No Connectors, Scissor Cut
Package Size	Ø3 mm x 54 mm (Ø0.12" x 2.13")
Operating Temperature	-20 to 70 °C
Storage Temperature	-40 to 85 °C

- These specifications were measured without connectors and based on a slow axis launch.

Fiber Specifications ^a	
Fiber Type	SM98-PR-U25A-H
Mode Field Diameter	6.6 ± 1.0 µm @ 980 nm
Coating Diameter	245 ± 15 µm
Attenuation (Max)	2.5 dB/km

- These specifications were measured without connectors and based on a slow axis launch.

